

DIE RÖMERTZEITLICHEN
GRÄBERFELDER VON FLAVIA SOLVA

Grabungen, Raubgrabungen und Notbergungen 1506 - 1980

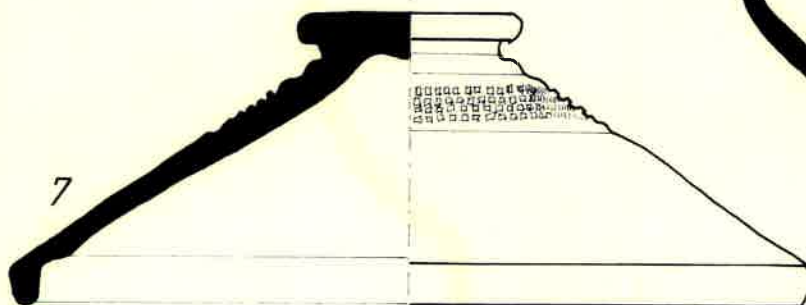
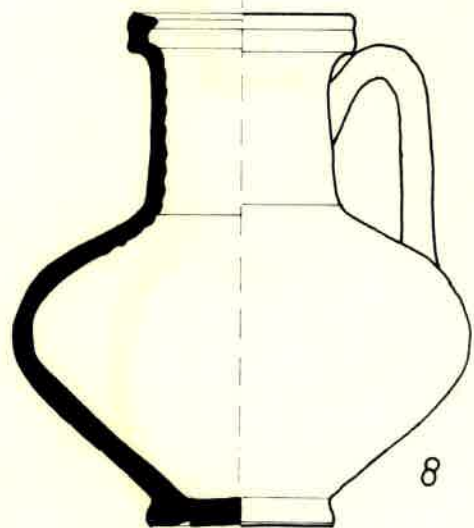
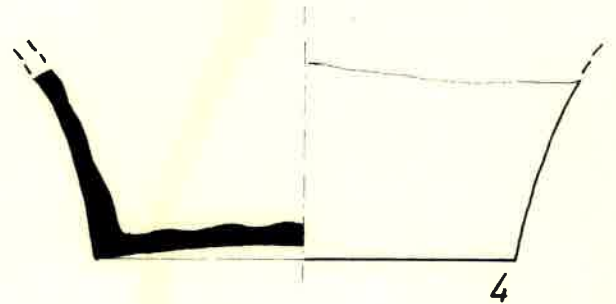
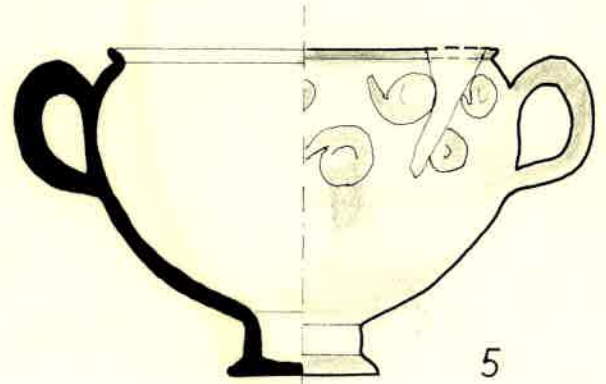
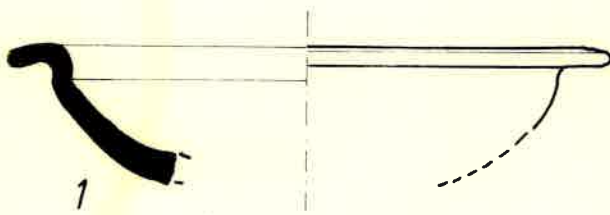
TAFELN

Gerald Fuchs

Dissertation an der geisteswissenschaftlichen Fakultät
der Universität Graz

1980

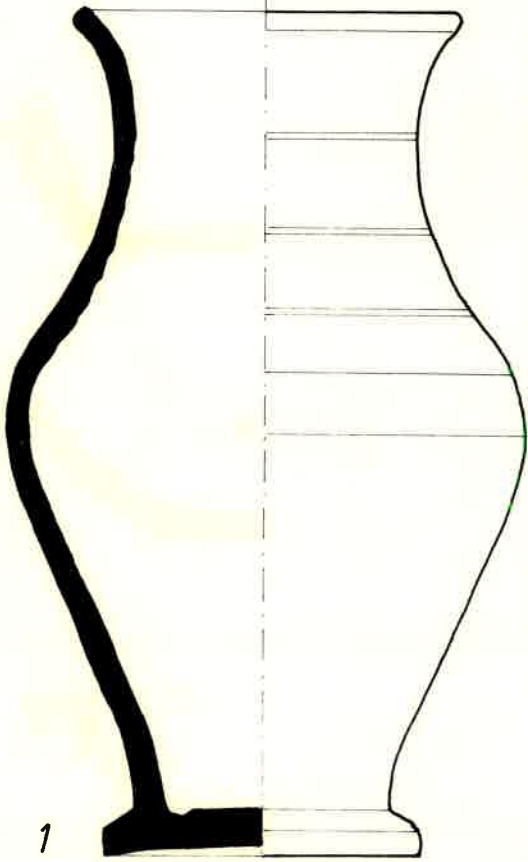
1



M: 1/2: 1,2,3,4,6,7,8
2/3: 5

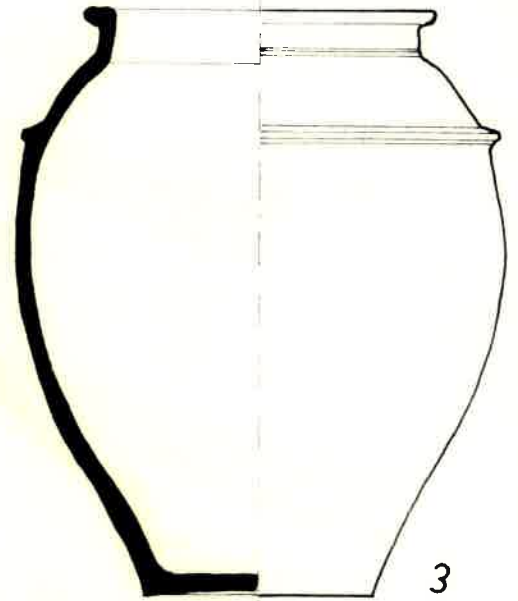
gez. G.Fuchs

2

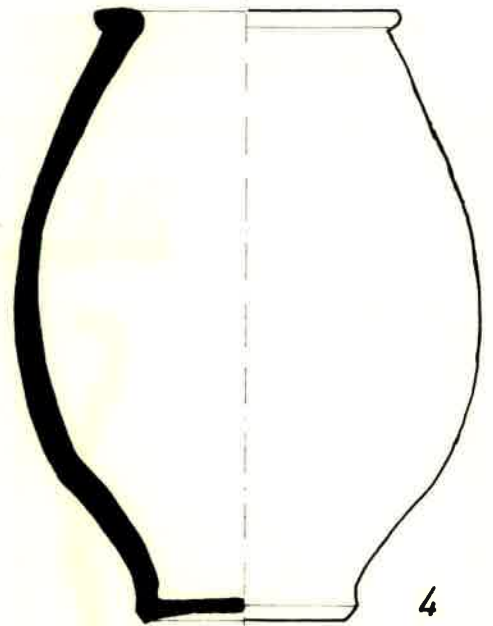


1

9

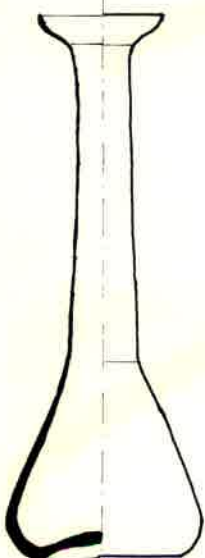


3

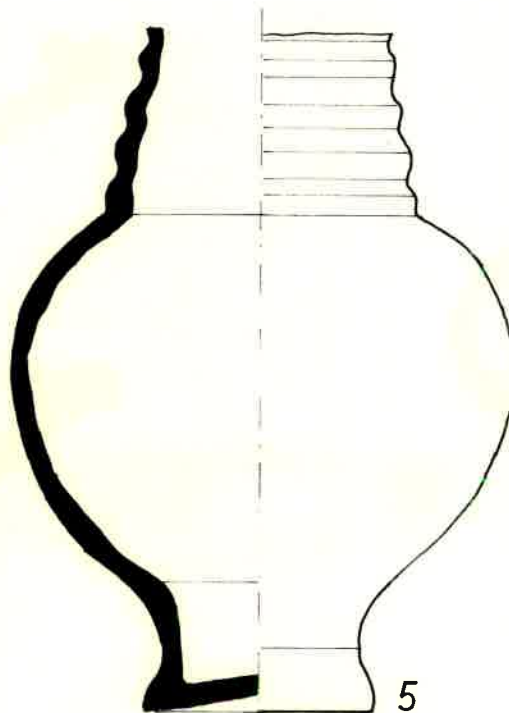


4

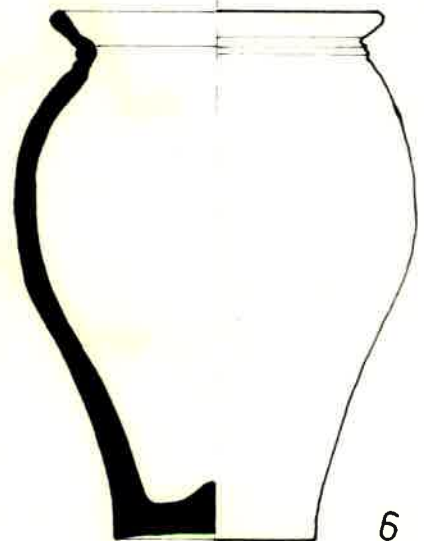
7A



2



5

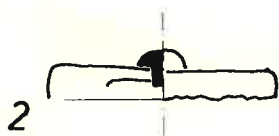
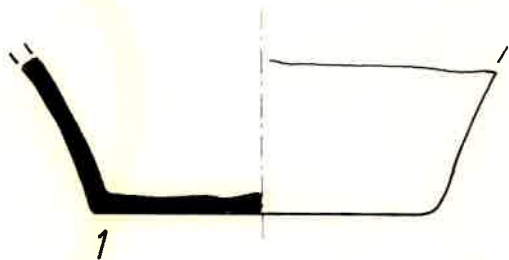


6

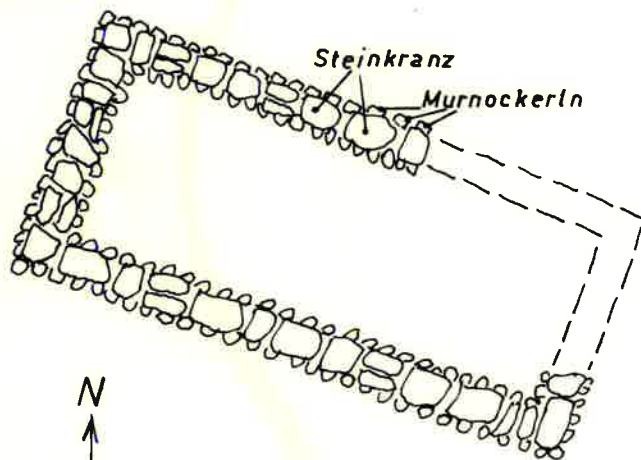
M: 1/2: 1,4,5,6
 2/3: 2
 1/4: 3

gez. G.Fuchs

10



14

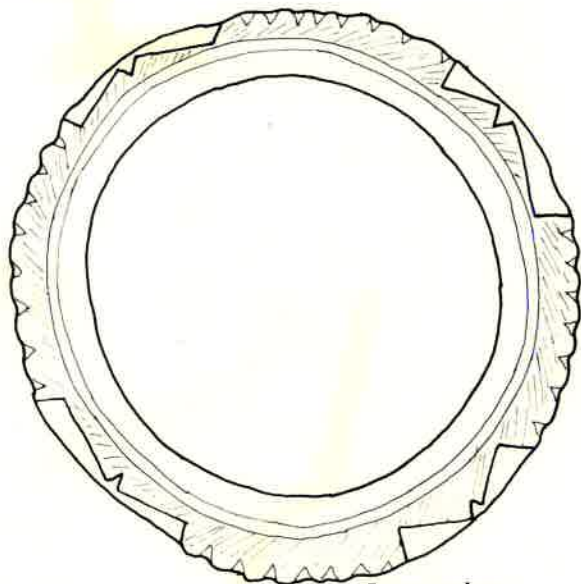


M = 1 : 25

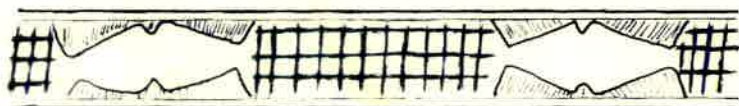


Schematische Skizze
nach Skizze W. Schmid 1915

13 C



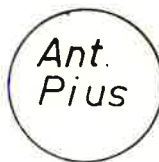
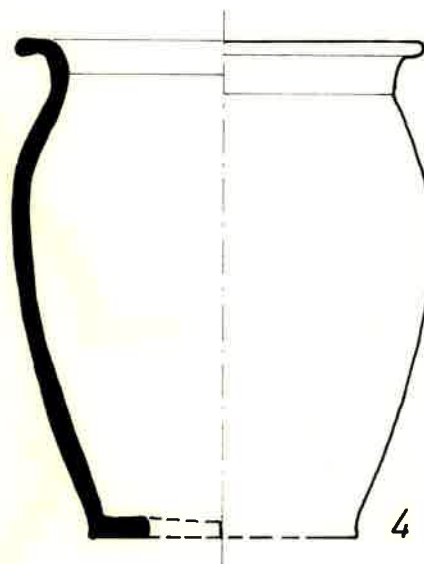
3



Seitenansicht

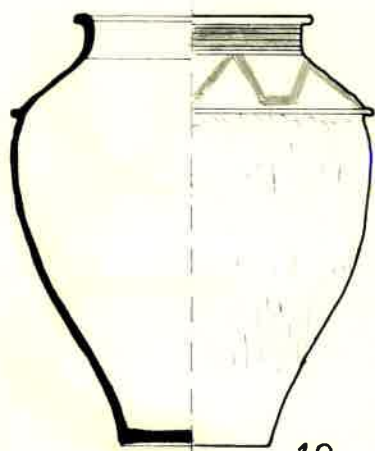
M. 1/1 : 2,3
1/4 : 1,4

16

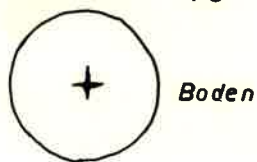


gez. G.Fuchs

22 D

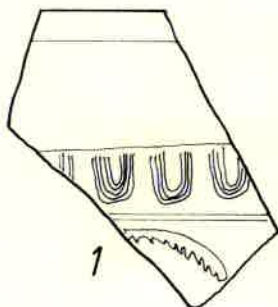


10

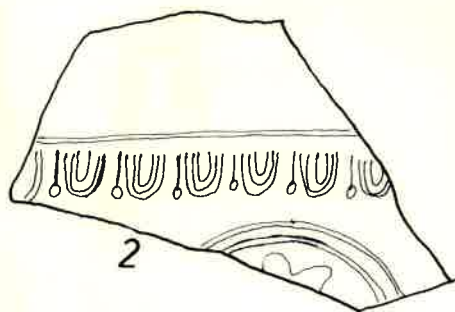


22 G-H

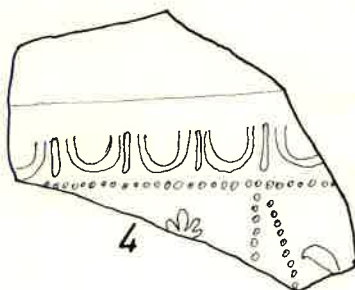
STREUFUNDE



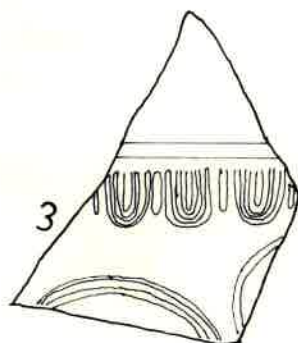
1



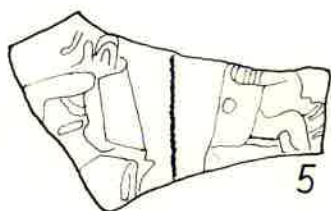
2



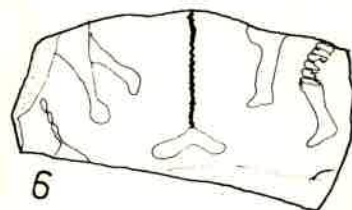
4



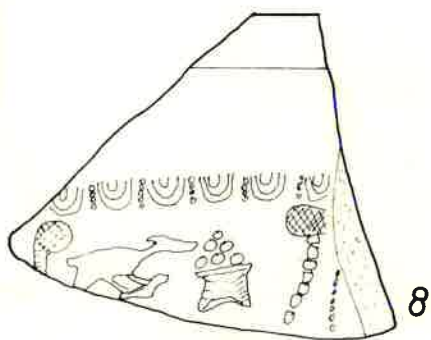
3



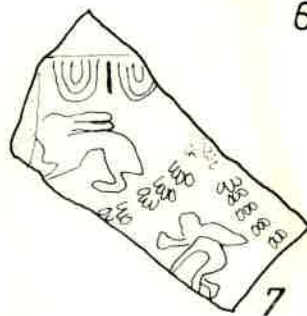
5



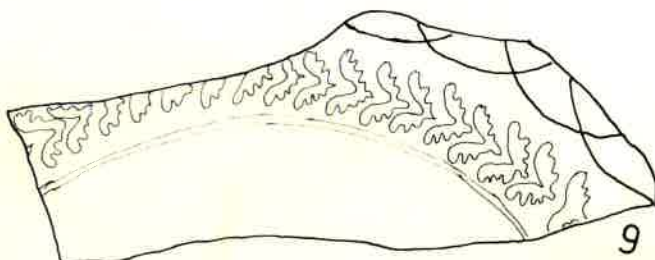
6



8



7

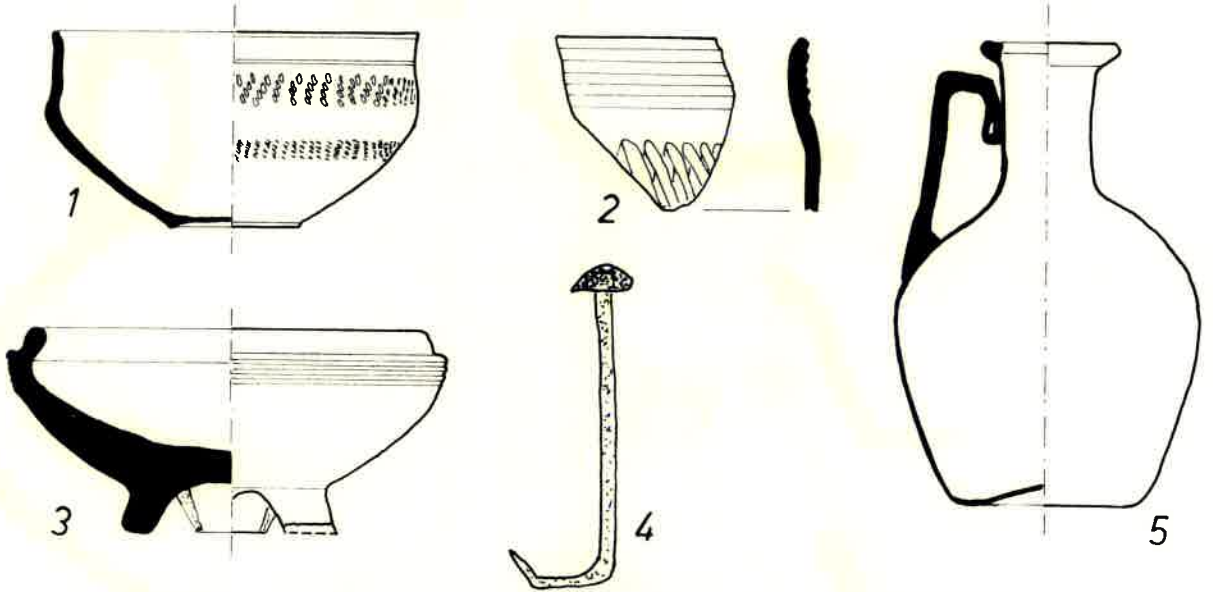


9

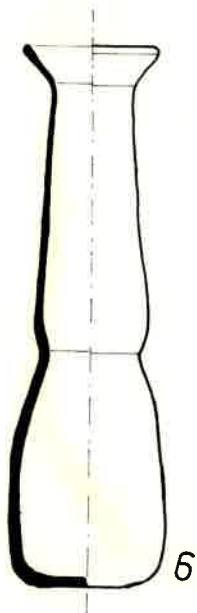
M: 2/3: 1-9
1/8: 10

gez. G.Fuchs

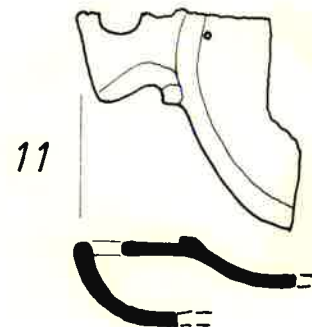
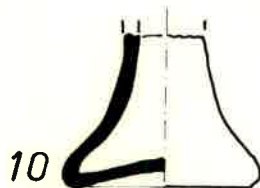
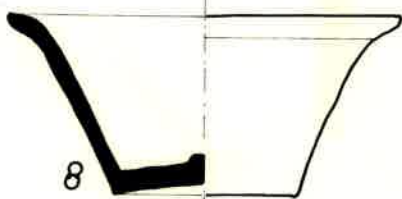
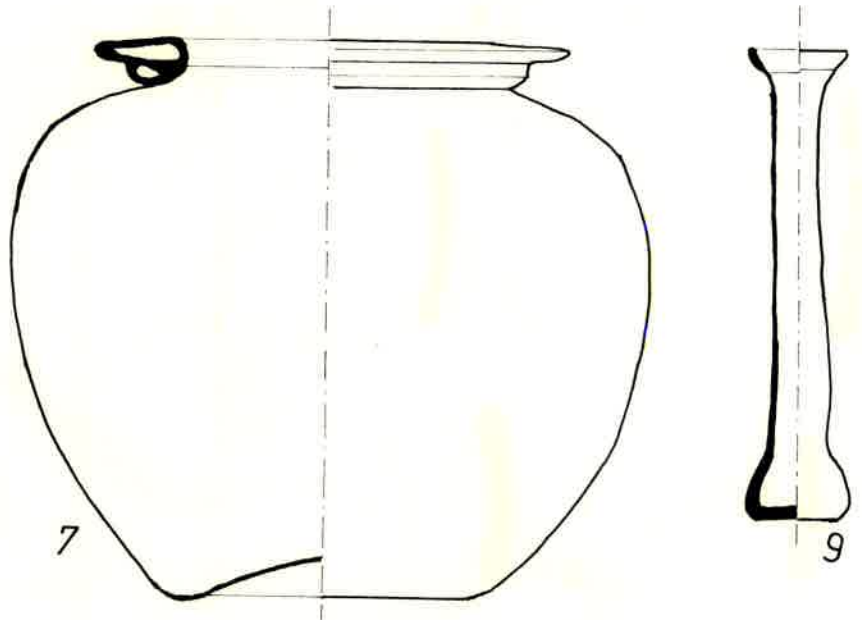
23



25



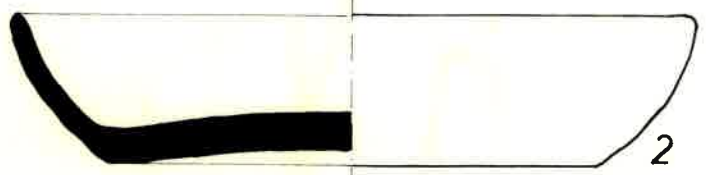
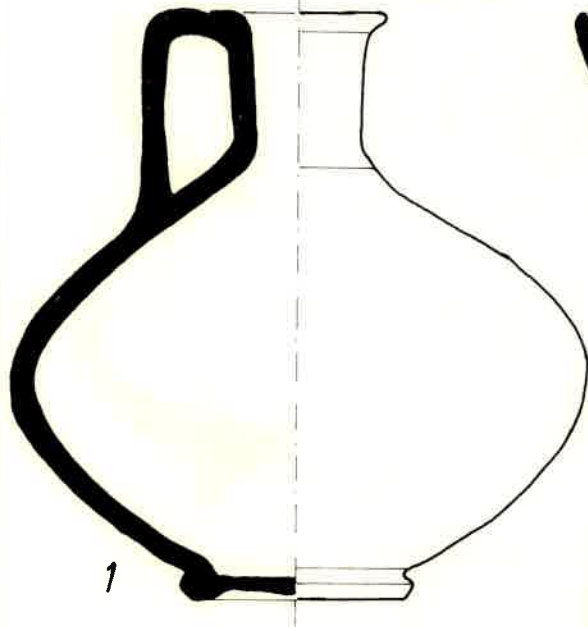
28



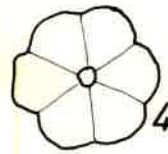
M: 1/1: 6
 1/2: 1,2,3,4,5,8,11
 1/3: 7
 2/3: 9,10

gez. G.Fuchs

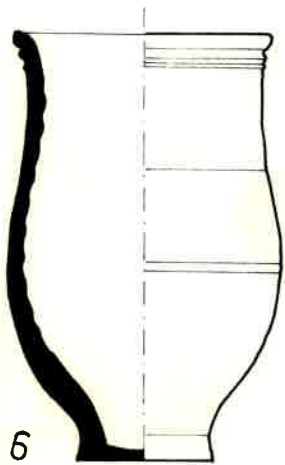
28



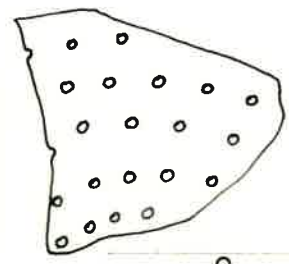
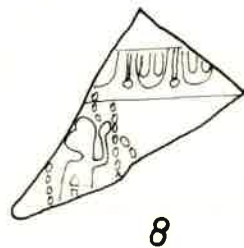
28 ?



30



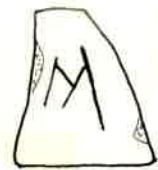
zw. 28 und 31 STREUFUNDE



9



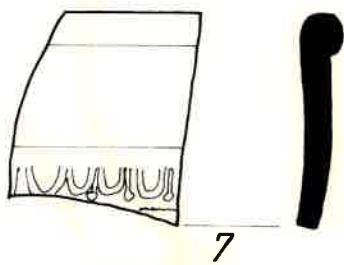
10



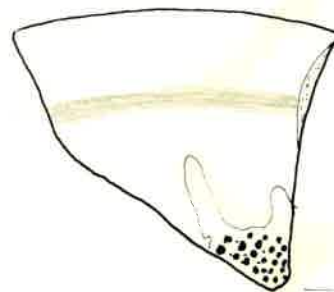
11



31



7



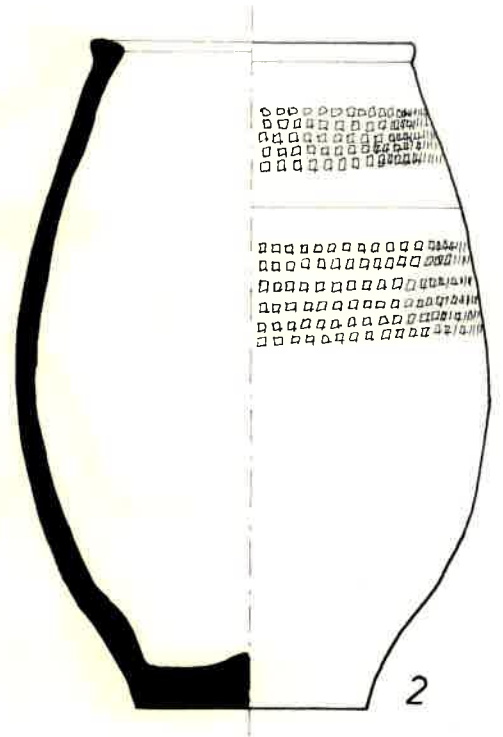
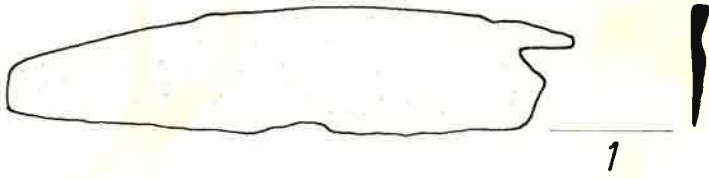
12



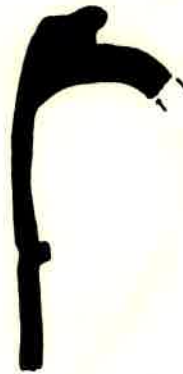
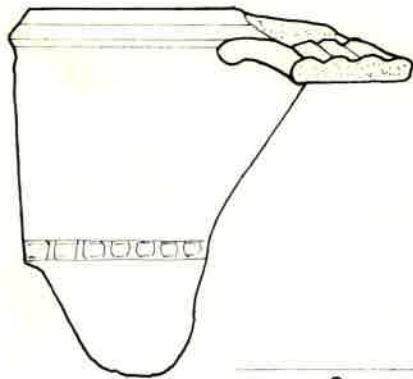
M : 1/2

gez. G.Fuchs

33 A

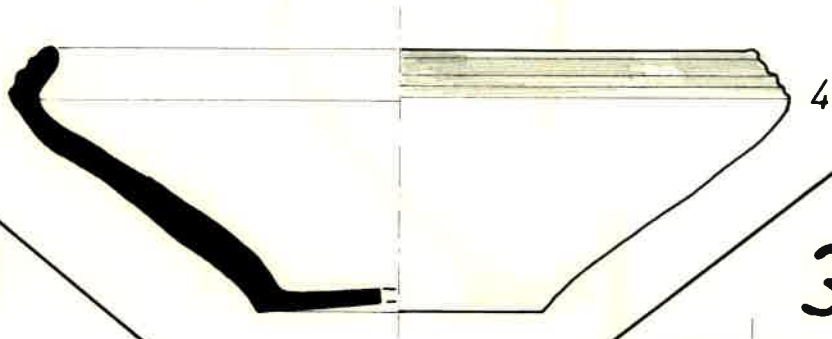


33 B

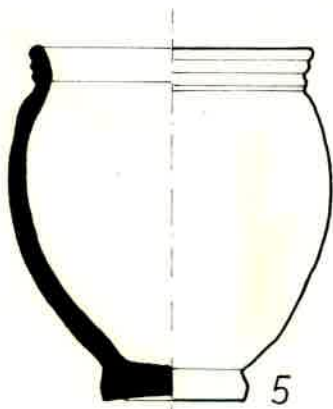


Ant.
Pius

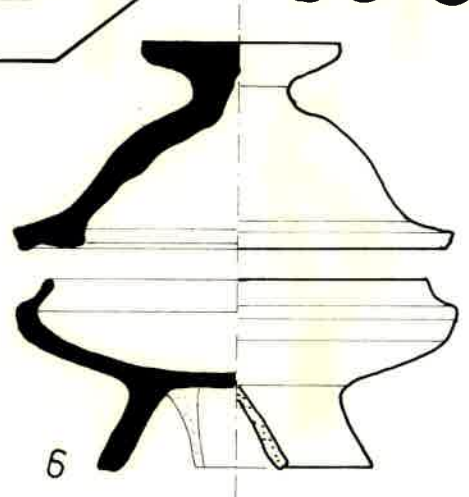
33 F ?



34 B



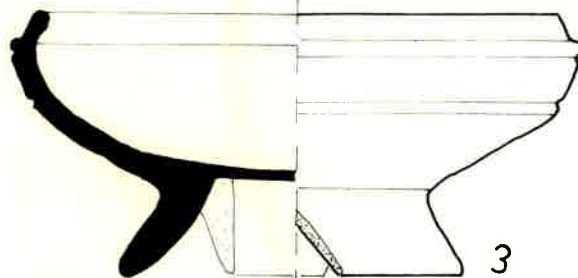
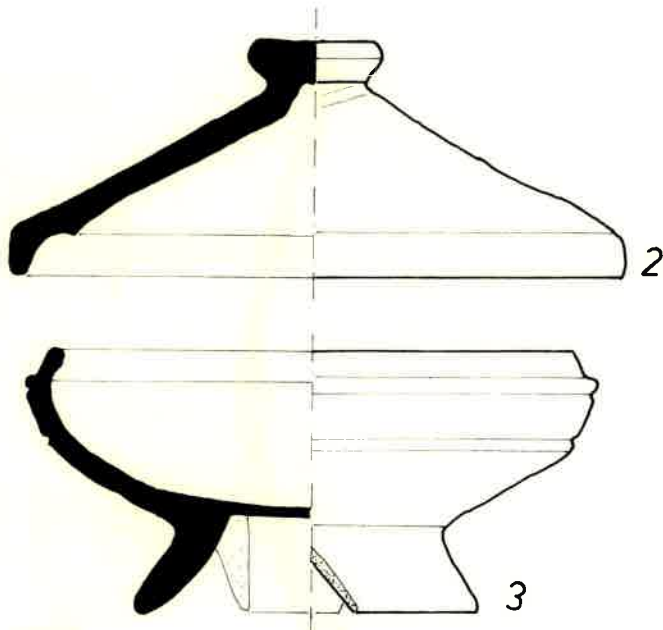
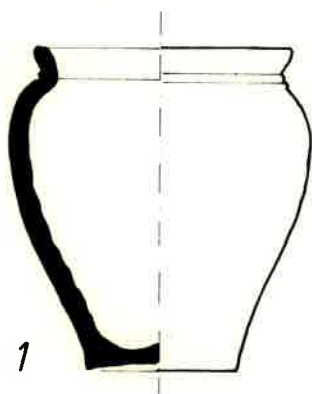
33 C



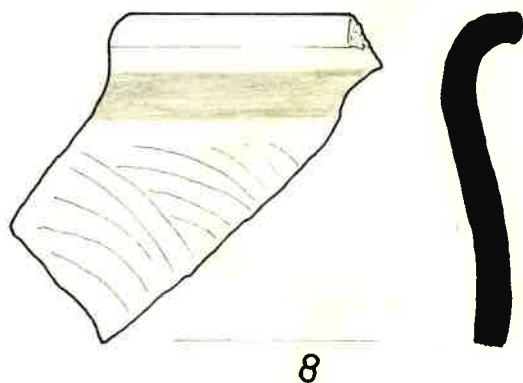
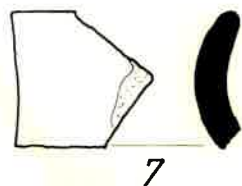
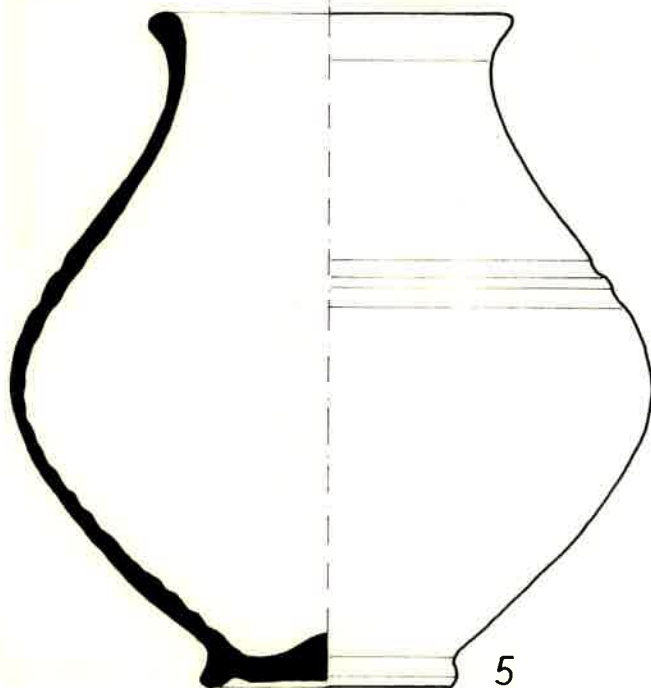
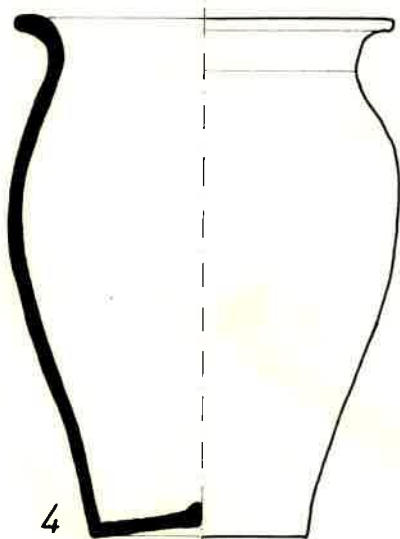
M. 1/1: 1
1/2: 2, 3, 5, 6
1/4: 4

gez. G. Fuchs

35 ?



36



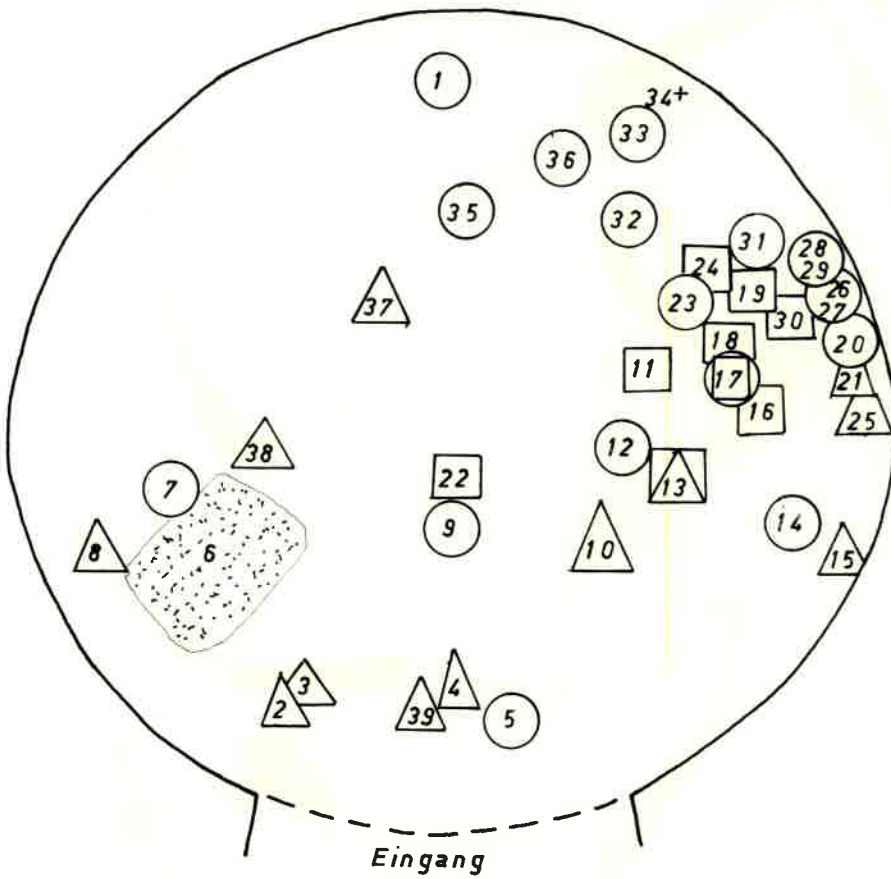
M : 1/2 : 1, 2, 3, 5, 6, 7, 8
1/4 : 4

gez. G. Fuchs

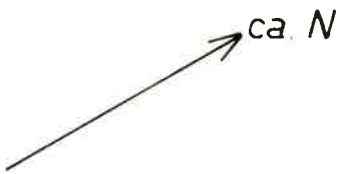
38

KRABERKOGEL

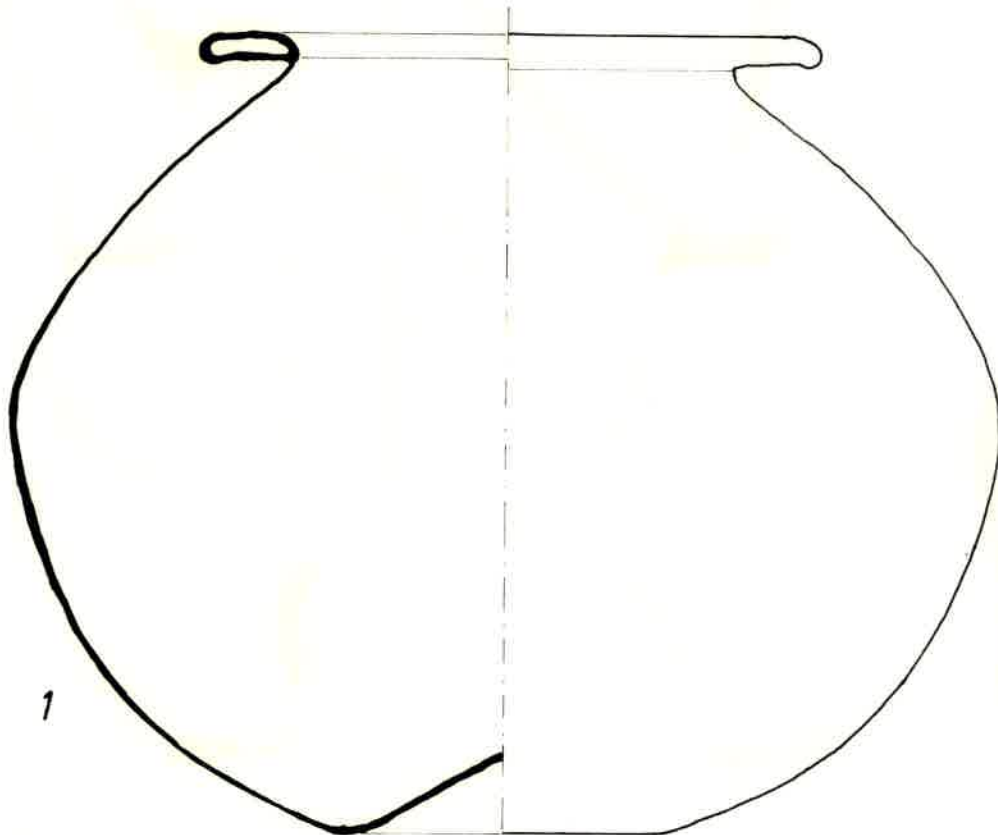
Lage der Beigaben
in der Grabkammer
nach Zeichnung W. Schmid



- Glasgefäße
- Keramik
- △ Metallgegenstände



M = 1 : 20



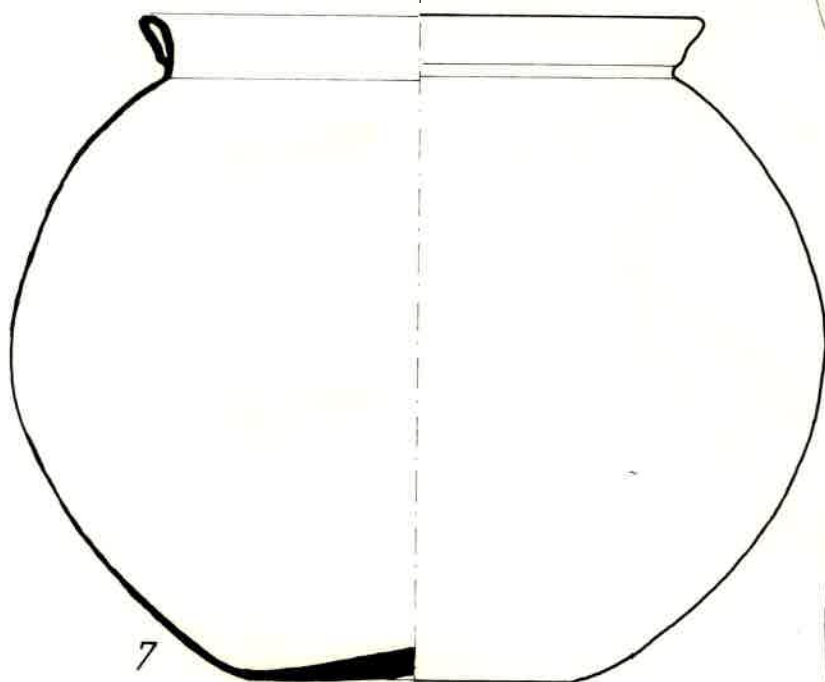
1

M : 2/3 : 1

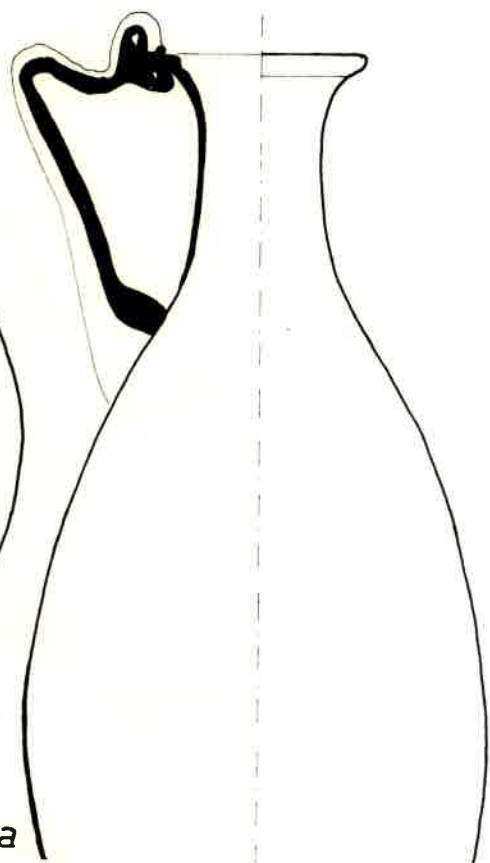
gez. G. Fuchs

38

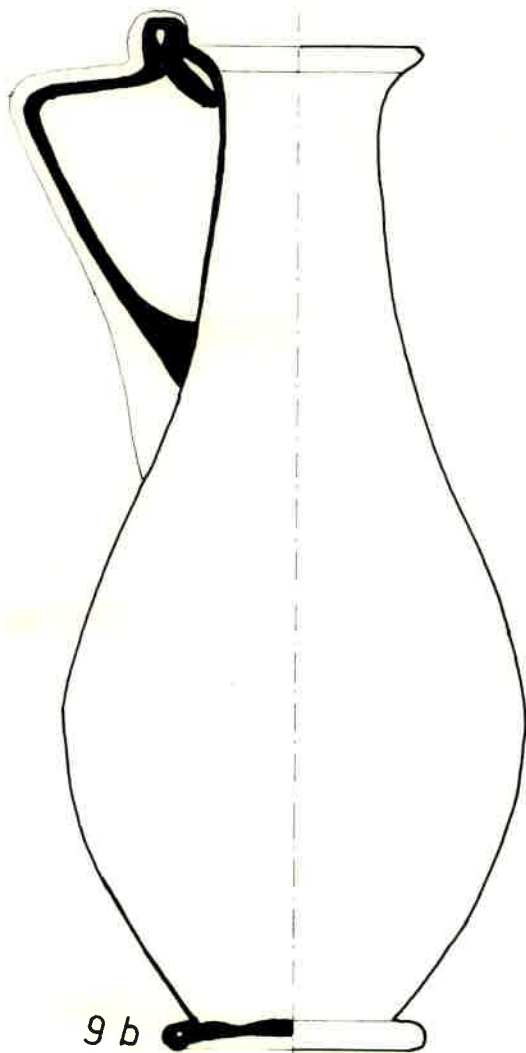
KRABERKOGEL



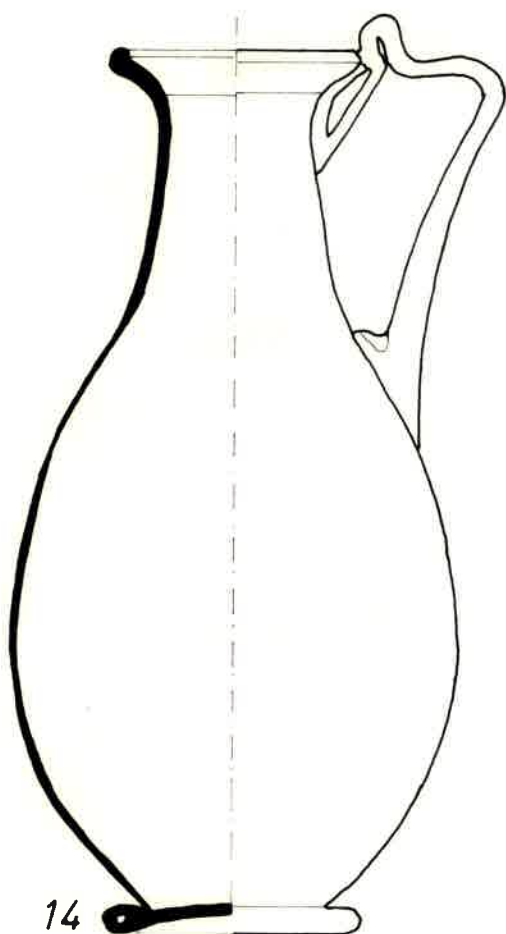
7



9a



9b

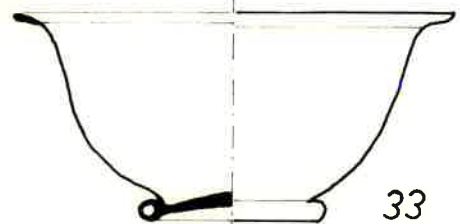
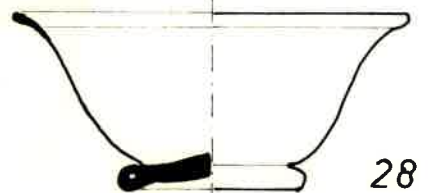
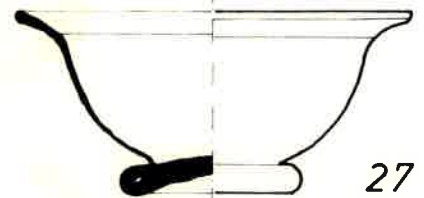
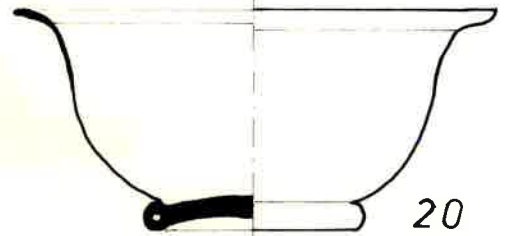
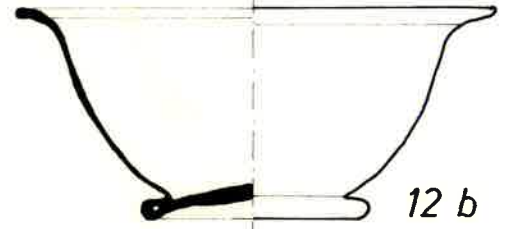
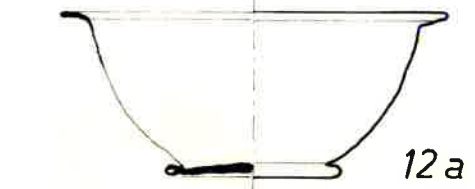
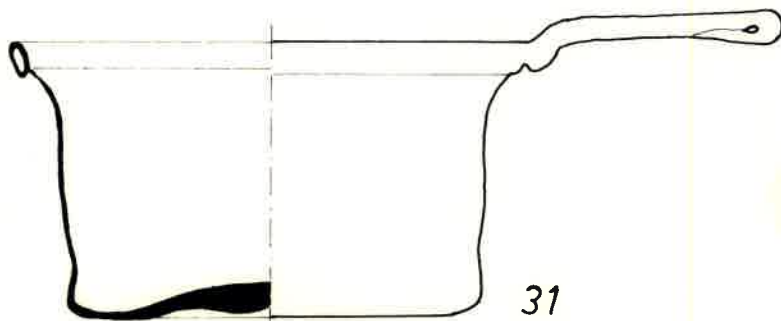
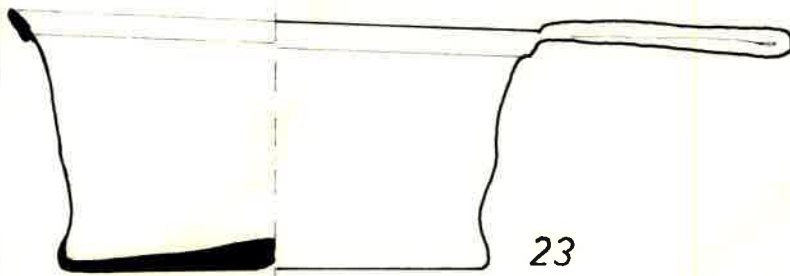
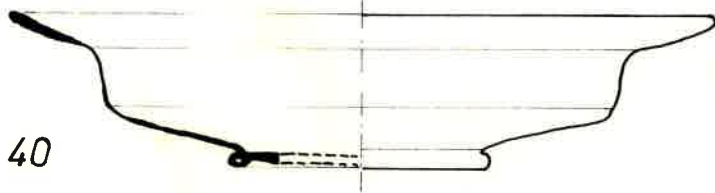
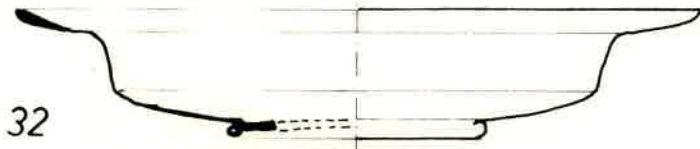
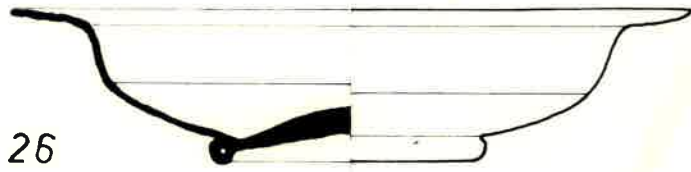


14

M: 1/2 : 7
2/3 : 9a, 9b, 14

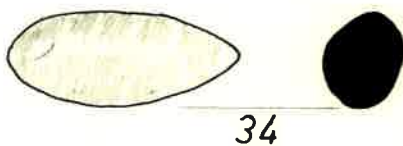
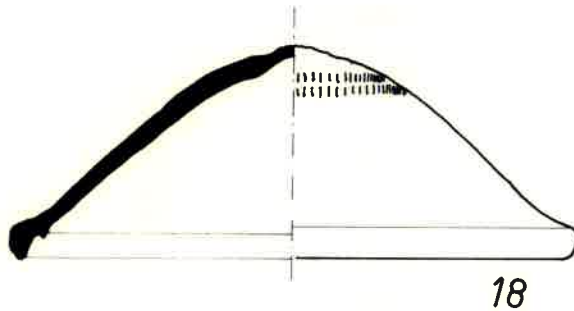
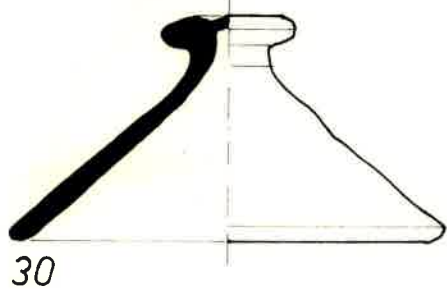
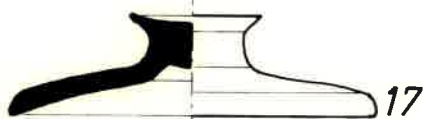
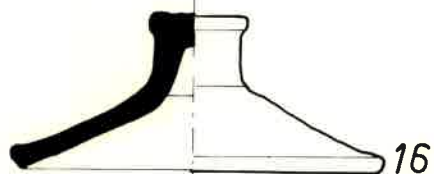
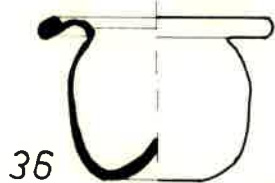
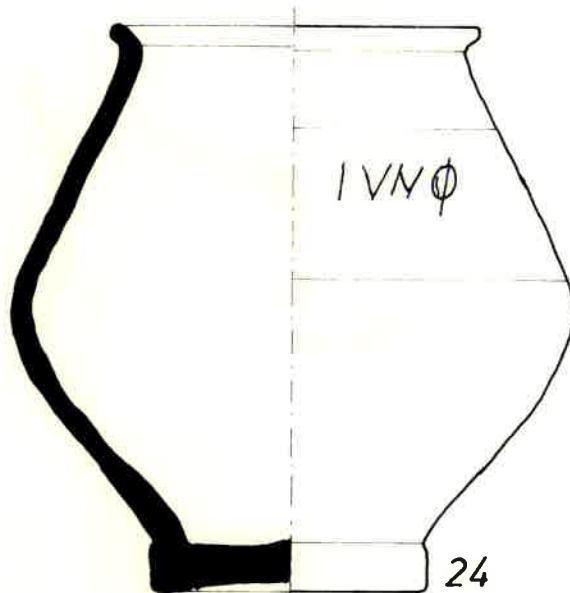
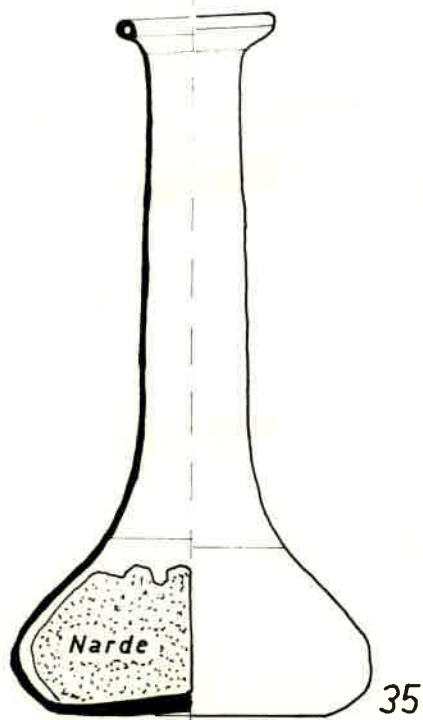
gez. G. Fuchs

38 KRABERKOGEL



38

KRABERKOGEL

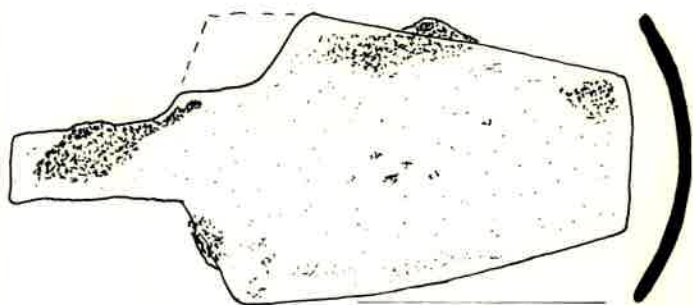


M : 1/2 : 16, 17, 18, 24, 30, 34
 2/3 : 35, 36

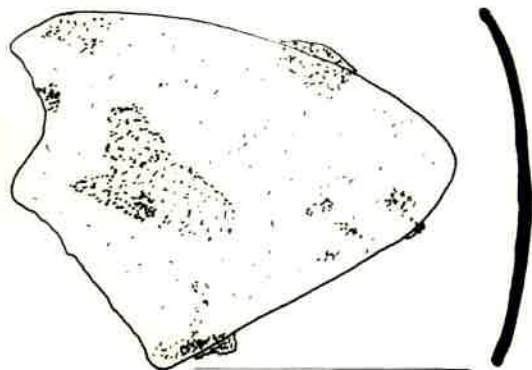
gez. G. Fuchs

38

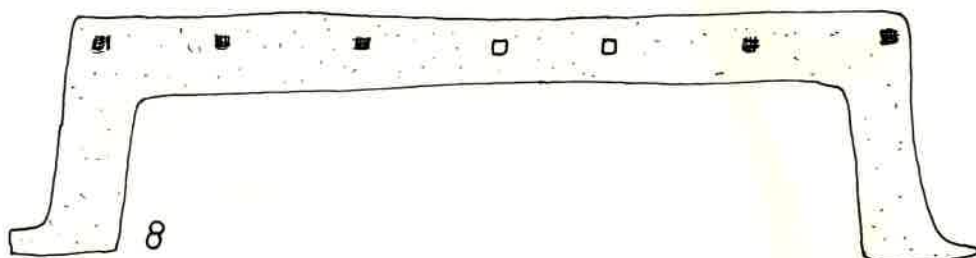
KRA BERKOGEL



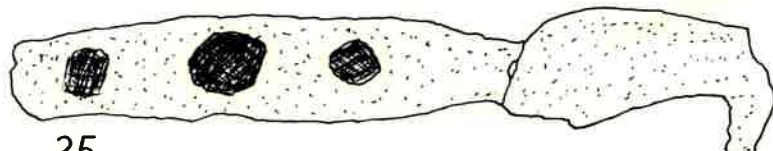
2



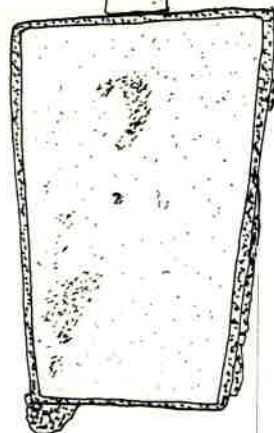
21



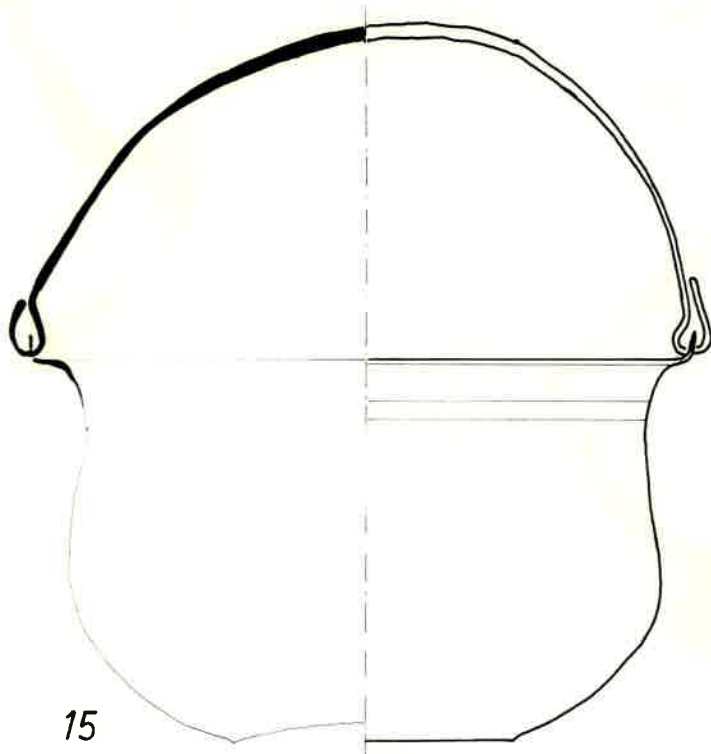
8



25



3

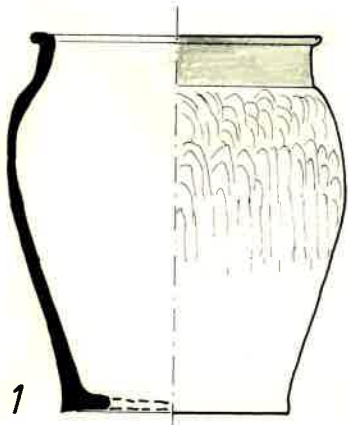


15

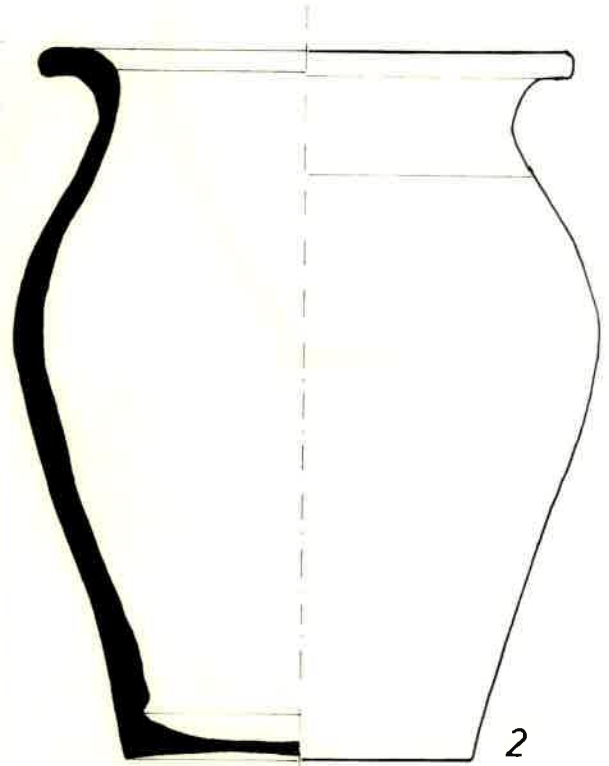
M : 1/2 : 2, 3, 8, 21, 25
2/3 : 15

gez. G. Fuchs

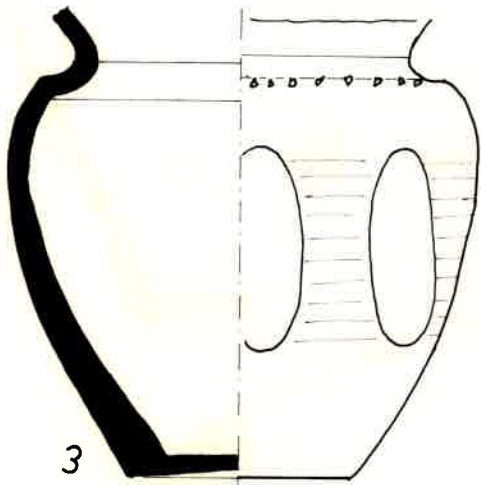
45



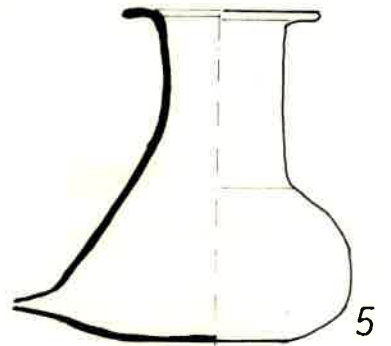
46



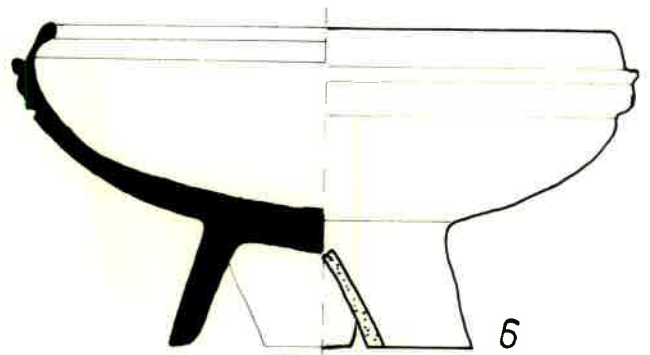
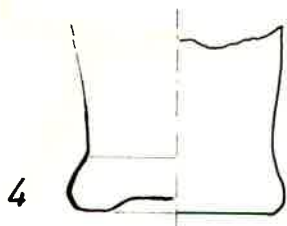
47



48



50



M : 1/2 : 2, 3, 6
 2/3 : 4, 5
 1/4 : 1

gez. G.Fuchs